

MONTHLY MEMBERSHIP PROGRESS REPORT

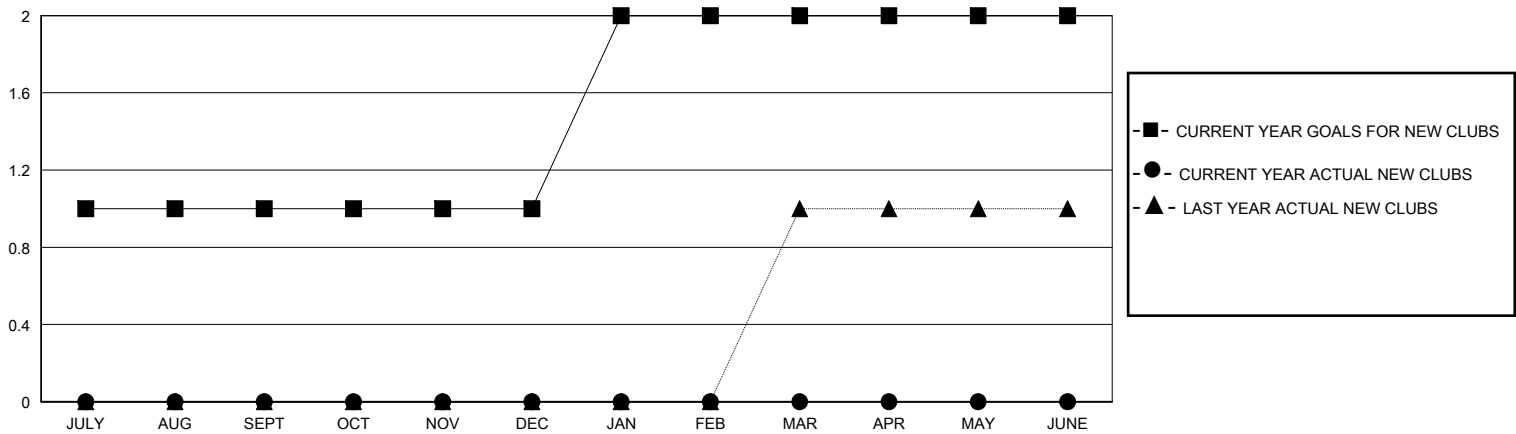
District 201Q4

Results as of: 6/30/2025

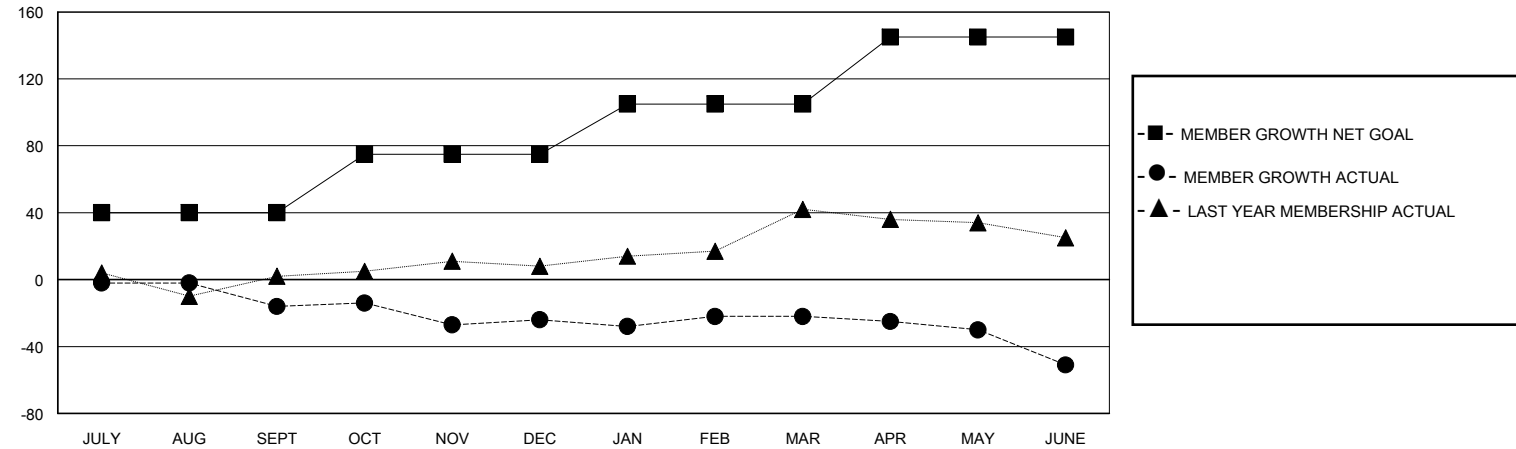
GMT: LOCATION AUSTRALIA GMT CA

| Clubs                 |               |           |               | Members               |                        |                      |  |
|-----------------------|---------------|-----------|---------------|-----------------------|------------------------|----------------------|--|
| RESULTS FOR 2024-2025 |               |           |               | RESULTS FOR 2024-2025 |                        |                      |  |
| QUARTER               | NEW CLUB GOAL | NEW CLUBS | DROPPED CLUBS | QUARTER               | MEMBER GROWTH NET GOAL | MEMBER GROWTH ACTUAL | DROPPED MEMBERS ACTUAL (including transfers) |
| JULY/AUG/SEPT         | 1             | 0         | 1             | JULY/AUG/SEPT         | 40                     | 20                   | 35   |
| OCT/NOV/DEC           | 0             | 0         | 0             | OCT/NOV/DEC           | 35                     | 26                   | 34   |
| JAN/FEB/MAR           | 1             | 0         | 0             | JAN/FEB/MAR           | 30                     | 28                   | 17   |
| APR/MAY/JUNE          | 0             | 0         | 1             | APR/MAY/JUNE          | 40                     | 31                   | 57   |

GOALS AND ACTUAL NEW CLUBS CUMULATIVE



GOALS AND ACTUAL MEMBERS CUMULATIVE



|   |   |  |
|---|---|--|
| DROPPED CLUBS: 2  | 34 CLUBS OF 60 ADDED 1 OR MORE NEW MEMBERS                | <u>GENDER DISTRIBUTION</u><br>MALE 507 (54.52%)<br>FEMALE 422 (45.38%) |
| <u>DROPPED MEMBERS</u><br>DECEASED 12<br>CLUB CANCELLED 0<br>OTHER 130<br>TOTAL 142 | <a href="#">CLICK HERE FOR CUMULATIVE MEMBERSHIP DATA</a> | TOTAL FAMILY UNIT MEMBERS 196<br>FAMILY MEMBERS PAYING HALF DUES 99    |